

# Paní mámo, šenkýřko

## lidová polka

Ten. + poz. *f* *tutti* *p* *Kř.* + Tr.

*Kř.* + Tr. Ten. + poz.

*Kř.* + Tr. Klar. *Kř.* *mf*

*tutti* *Fine //* *Klar.* *sfz* *mp* *mp* *tr*

*tr* *mp*

*mp* *f* *tutti*

*Kř.* + Tr. *Kř.* + Tr.

Ten. + poz. Kř. + Tr.

Musical staff for Tenor and Trombones. The staff contains a sequence of chords and melodic lines. The first measure is marked 'Ten. + poz.' and the last measure is marked '+ Tr.'.

Klar. Kř. mf

Musical staff for Clarinet and Trumpet. The staff contains a sequence of chords and melodic lines. The first measure is marked 'Klar.' and the last measure is marked 'Kř. mf'.

1. tutti sfz mp f

Musical staff for the first tutti section. The staff contains a sequence of chords and melodic lines. The first measure is marked '1. tutti' and the last measure is marked 'f'. There are dynamic markings 'sfz' and 'mp' in the middle.

Basso 2. tutti Klar. mp sfz

Musical staff for Bass and the second tutti section. The staff contains a sequence of chords and melodic lines. The first measure is marked 'Basso' and the last measure is marked 'Klar. mp'. There are dynamic markings 'sfz' and 'mp' in the middle.

tr

Musical staff for trills. The staff contains a sequence of chords and melodic lines with trills marked 'tr'.

Ten. + poz. Basso tr

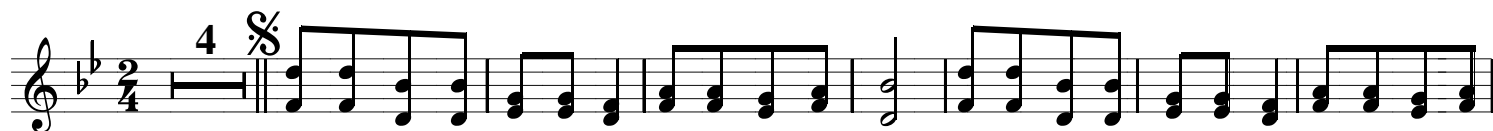
Musical staff for Tenor, Trombones and Bass. The staff contains a sequence of chords and melodic lines. The first measure is marked 'Ten. + poz.' and the last measure is marked 'Basso tr'.

cresc. tutti f Tr. D.S. al Fine

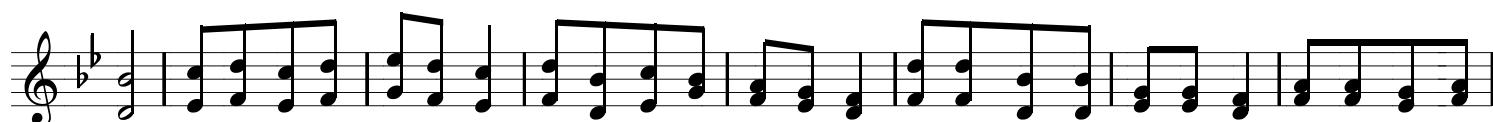
Musical staff for the crescendo and tutti section. The staff contains a sequence of chords and melodic lines. The first measure is marked 'cresc.' and the last measure is marked 'D.S. al Fine'. There are dynamic markings 'tutti' and 'f' in the middle.

# Paní mámo, šenkýřko

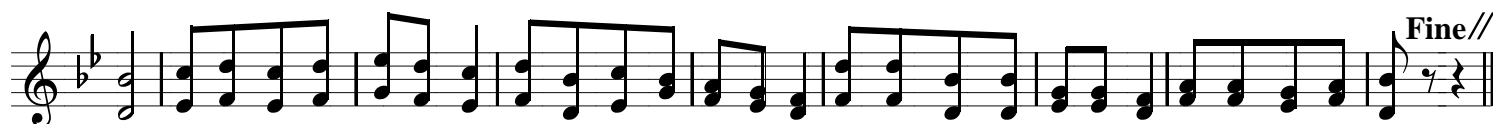
## lidová polka



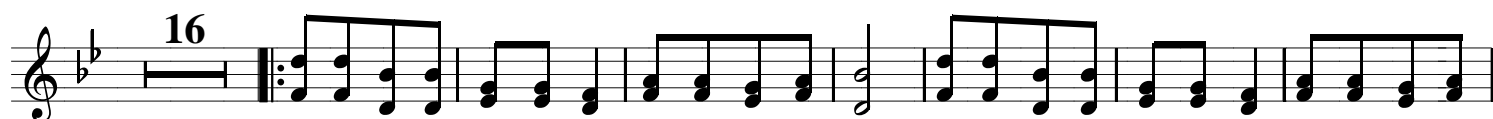
1. Pa - ní má - mo šen - kýř - ko vy - jdě - te k nám ven, mi Vám ně - co no - vě - ho po - vě - dě - ti  
4. Proč pak bych vás ta - dy přec ne - chat ne - mě - la, vždyť já vás mám děv - ča - ta i s clap - ci rá -



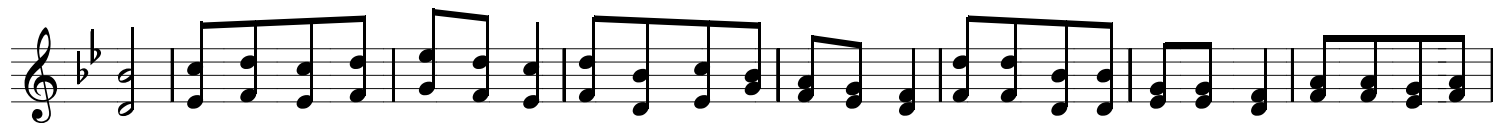
chcem. By ste tak ho - dná by - la a nás ta - dy ne - cha - la je - stli že né dvě no - ci a - spoň do - rá -  
da. Co je plat - ná mu - zi - ka když tu cha - sa ne - ju - chá to nám vždy - ky ří - ká - val i náš pan - tá -



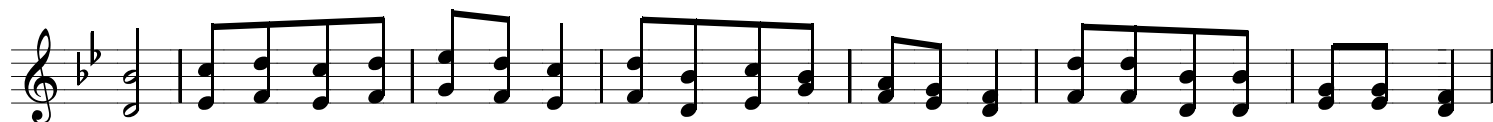
na. By ste tak hod - ná by - la a nás ta - dy ne - cha - la je - stli že né dvě no - ci a - spoň do - rá - na.  
ta. Co je plat - ná mu - zi - ka když tu cha - sa ne - ju - chá to nám vždy - ky ří - ká - val i náš pan - tá - ta.



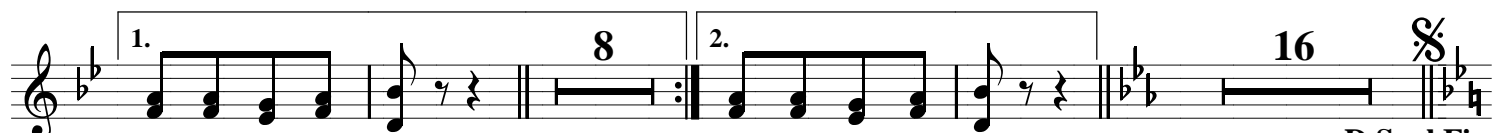
2. Vy - šli sme se po - dí - vat k na - ší hos - po - dě, kdo to tam zas po ča - se pě - kně no - tu -  
3. Pa - ní má - mo šen - kýř - ko vy - jdě - te dá - le, je - stli pak nás ne - chá - te do - rá - na v sá -



je. Sou tam hez - ký mlá - den - ci ne - jsou nám pro le - gra - ci s tě - ma se tě - šit chce - me ve - dne i v no -  
le. My sme se k vám při - šli ptát smí - me - li zde tan - co - vat, smí - me - li zde tan - co - vat s clap - ci špá - so -



ci. Sou tam hez - ký mlá - den - ci ne - jsou nám pro le - gra - ci s tě - ma se tě - šit chce - me  
vat. My sme se k vám při - šli ptát smí - me - li zde tan - co - vat, smí - me - li zde tan - co - vat



ve - dne i v no - ci.

s clap - ci špá - so - vat.

**D.S. al Fine**